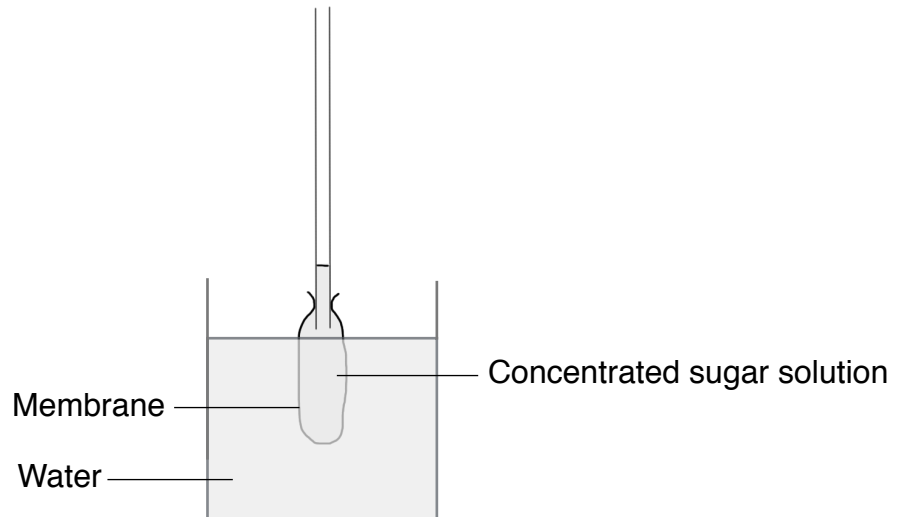


- 1 A student set up an investigation to look at the movement of substances through a membrane

The diagram shows the apparatus:



- 1 (a) (i) After a period of time, the level of the concentrated sugar solution changes.

Explain, as fully as you can, why the level changes.

.....

.....

.....

.....

.....

.....

.....

.....

.....

.....

(3 marks)

- 1 (a) (ii) The student repeated the experiment with a more dilute concentration of sugar solution.

The results were different.

In what way were the results of the experiment different?

Give a reason for your answer.

.....

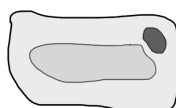
.....

.....

(2 marks)

(5 marks)

- 2 The diagrams show what happens to the shape of a plant cell placed in distilled water.



- 2 (a) (i) The cell swells. Explain why.

.....

.....

.....

(2 marks)

- 2 (b) A piece of peeled potato is placed in concentrated sugar solution. Describe the change which will occur explain why this change occurs.

.....

.....

.....

.....

.....

.....

(3 marks)

(Total 5 marks)

Login or subscribe to my-GCSEscience.com to see the answers and commentary